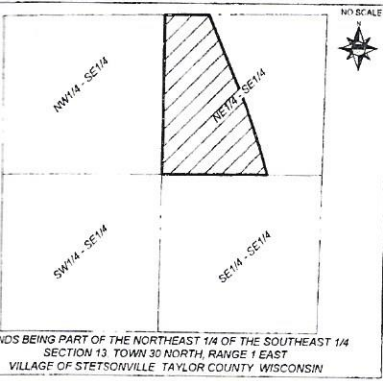


FOREST VIEW SUBDIVISION

LANDS BEING PART OF THE NORTHEAST 1/4 OF THE SOUTHEAST 1/4,
SECTION 13, TOWN 30 NORTH, RANGE 1 EAST
VILLAGE OF STETSONVILLE, TAYLOR COUNTY, WISCONSIN



LANDS BEING PART OF THE NORTHEAST 1/4 OF THE SOUTHEAST 1/4
SECTION 13, TOWN 30 NORTH, RANGE 1 EAST
VILLAGE OF STETSONVILLE, TAYLOR COUNTY, WISCONSIN

N 89°27'00" E 5300.41' P.O.B. 1329.02' 966.52'

LEGEND

- ⊕ FOUND MONUMENT AS NOTED
- ⊙ FOUND 2" IRON PIPE
- ⊙ FOUND 1" IRON PIPE
- ⊙ SET 1-1/4" BY 18" SOLID ROD-4.19 LBS./FT.
- ⊙ SET 3/4" BY 18" SOLID ROD-1.50 LBS./FT.
- () RECORD INFORMATION
- ▲ COMPUTED POSITION
- ▭ DELINEATED WETLAND AREA

Curve Table				
Curve #	Arc Length	Radius	Chord Length	Bearing
C1	187.61'	5629.65'	187.60'	S21°15'30" E
C2	286.09'	5629.65'	286.06'	N19°15'30" E
C3	281.48'	5629.65'	281.45'	N16°15'30" E
C4	755.18'	5629.65'	754.61'	S19°15'30" E
C5	24.64'	75.00'	24.53'	N56°15'30" E
C6	65.83'	75.00'	63.74'	N22°15'30" E
C7	60.00'	75.00'	58.41'	N25°15'30" E
C8	60.00'	75.00'	58.41'	N7°15'30" E
C9	74.86'	75.00'	71.79'	N56°15'30" E
C10	98.12'	75.00'	91.27'	S09°15'30" E
C11	26.06'	75.00'	25.93'	S56°15'30" E
C12	409.51'	75.00'	80.00'	S89°15'30" E

MAIN CURVE TANGENT BEARINGS
C4 S 22°54'39" E S 15°13'30" E
C12 N 66°08'03" W S 66°42'34" W

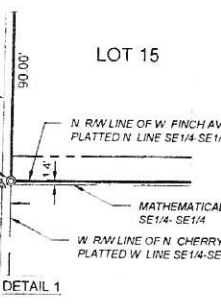
REVEYOR'S NOTES

South Line of the NE 1/4 - SE 1/4 Section 13, Town 30 North, Range 1 East as shown is from the Crest-View Addition Subdivision Plat per to a SE 1/16th Corner calculated from the mathematical South Line of said NE 1/4 - SE 1/4 Section 13, Town 30 North, Range 1 East and differs from the mathematical South Line of said NE 1/4 - SE 1/4 Section 13, Town 30 North, Range 1 East by 4 feet north on the west and 1.6 feet north on the east.

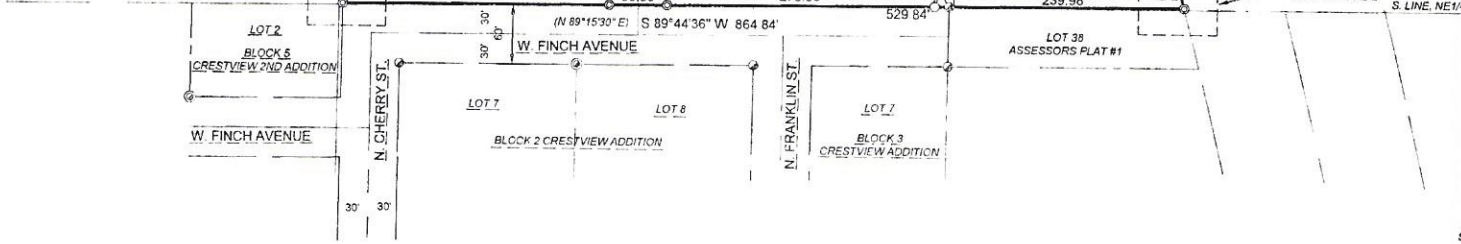
Platted South Line as the South Line of this Subdivision as the mathematical South Line falls in the Right-of-way of W. Finch Avenue.

West Line of the NE 1/4 - SE 1/4 Section 13, Town 30 North, Range 1 East as shown is from a line drawn from a mathematical CE 1/16th Corner to a SE 1/16th Corner calculated from the Crest-View Addition Subdivision Plat and differs from the mathematical West Line of said NE 1/4 - SE 1/4 Section 13, Town 30 North, Range 1 East by 3.88 feet east on the South and 0.00 feet on the North.

Platted SE 1/16th Corner to determine the West Line of the NE 1/4 - SE 1/4 Section 13, Town 30 North, Range 1 East.



SEE DETAIL 1



LOT 1

LOT 38 ASSESSORS

S. LINE, NE 1/4

SE